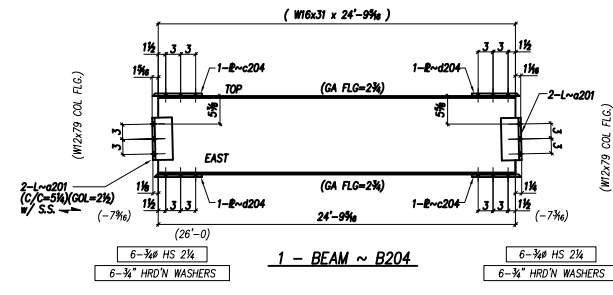
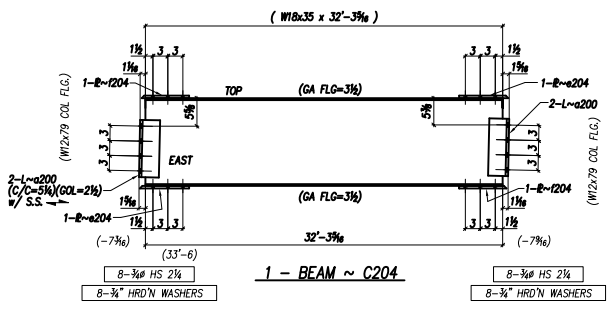


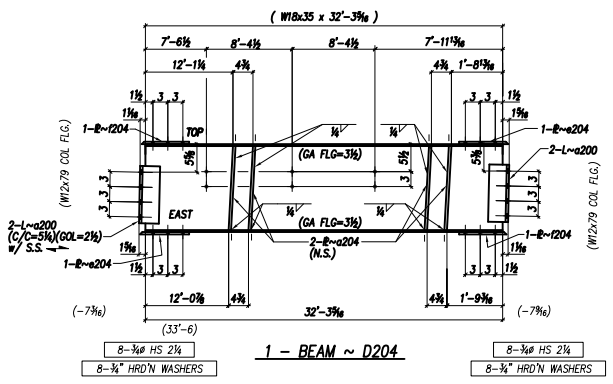
1 - BEAM ~ A204



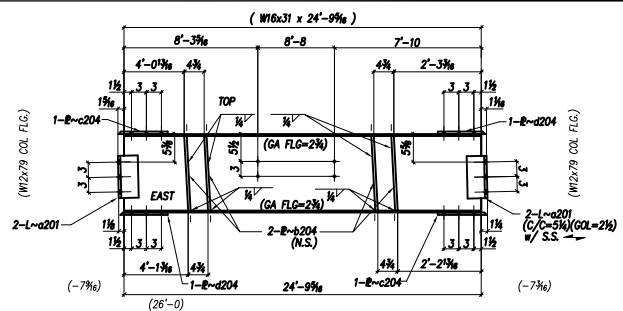
1 - BEAM ~ B204



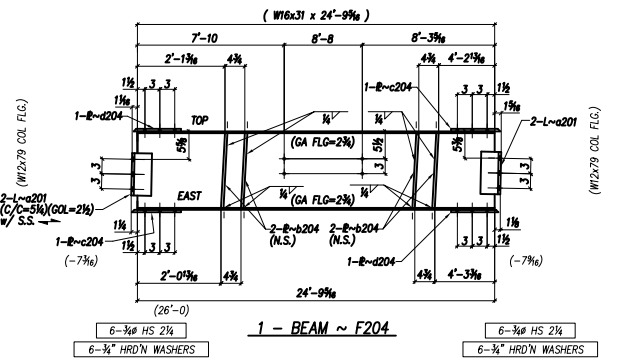
1 - BEAM ~ C204



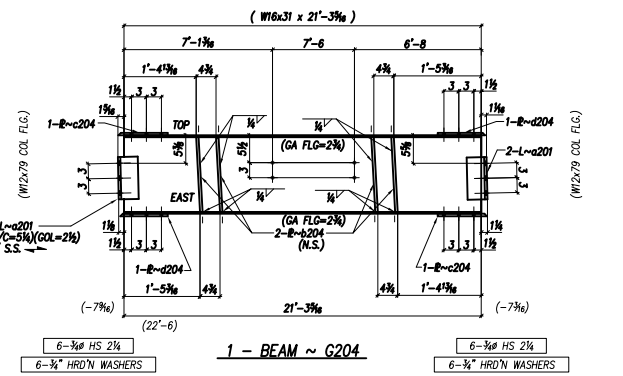
1 - BEAM ~ D204



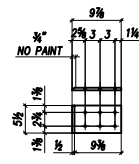
1 - BEAM ~ E204



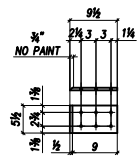
1 - BEAM ~ F204



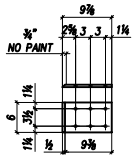
1 - BEAM ~ G204



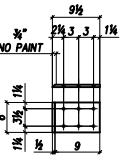
c204



d204



e204



f204

No. Pcs.	Materials	Length	Temp. Mark	Steel Cr.	No. Pcs.	Description	Shipping Mark	Weight
1	W16x31	24'-9 1/2"		A572	1	BEAM	A204	
4	L 4x4x5/8	0'-8 1/2"		a201 A572				
1	E 1/2 x 5 1/2	0'-9 1/2"		c204 A572				
1	E 1/2 x 5 1/2	0'-9 1/2"		d204 A572				
12	3/4 x 2 1/2 BOLT & NUT			A325				
12	3/8" HRD'D WASHER			-				
1	W16x31	24'-9 1/2"		A572	1	BEAM	B204	
4	L 4x4x5/8	0'-11 1/2"		a201 A572				
2	E 1/2 x 5 1/2	0'-9 1/2"		c204 A572				
2	E 1/2 x 5 1/2	0'-9 1/2"		d204 A572				
24	3/4 x 2 1/2 BOLT & NUT			A325				
24	3/8" HRD'D WASHER			-				
1	W18x35	32'-3 3/8"		A572	1	BEAM	C204	
4	L 4x4x5/8	0'-11 1/2"		a201 A572				
2	E 1/2 x 6	0'-9 1/2"		c204 A572				
2	E 1/2 x 6	0'-9 1/2"		d204 A572				
24	3/4 x 2 1/2 BOLT & NUT			A325				
24	3/8" HRD'D WASHER			-				
1	W18x35	32'-3 3/8"		A572	1	BEAM	D204	
4	L 4x4x5/8	0'-11 1/2"		a201 A572				
4	E 1/2 x 5	1'-4 1/2"		c204 A572				
2	E 1/2 x 6	0'-9 1/2"		c204 A572				
2	E 1/2 x 6	0'-9 1/2"		d204 A572				
24	3/4 x 2 1/2 BOLT & NUT			A325				
24	3/8" HRD'D WASHER			-				
1	W16x31	24'-9 1/2"		A572	1	BEAM	E204	
4	L 4x4x5/8	0'-11 1/2"		a201 A572				
4	E 1/2 x 5	1'-2 1/2"		b204 A572				
2	E 1/2 x 5 1/2	0'-9 1/2"		c204 A572				
2	E 1/2 x 5 1/2	0'-9 1/2"		d204 A572				
24	3/4 x 2 1/2 BOLT & NUT			A325				
24	3/8" HRD'D WASHER			-				
1	W16x31	24'-9 1/2"		A572	1	BEAM	F204	
4	L 4x4x5/8	0'-11 1/2"		a201 A572				
4	L 4x4x5/8	0'-11 1/2"		b204 A572				
2	E 1/2 x 5 1/2	0'-9 1/2"		c204 A572				
2	E 1/2 x 5 1/2	0'-9 1/2"		d204 A572				
24	3/4 x 2 1/2 BOLT & NUT			A325				
24	3/8" HRD'D WASHER			-				
1	W16x31	21'-3 3/8"		A572	1	BEAM	G204	
4	L 4x4x5/8	0'-11 1/2"		a201 A572				
4	L 4x4x5/8	0'-11 1/2"		b204 A572				
2	E 1/2 x 5 1/2	0'-9 1/2"		c204 A572				
2	E 1/2 x 5 1/2	0'-9 1/2"		d204 A572				
24	3/4 x 2 1/2 BOLT & NUT			A325				
24	3/8" HRD'D WASHER			-				
SURFACE PREP:							TOTAL WEIGHT ON DWG:	
SHOP PAINT:							WELD ELECTRODES:	
PAINT AROUND HOLES:							HOLES:	
NO PAINT WITHIN 3" OF HOLES:							BOLTS:	
CUSTOMER:								
JOB:								
LOCATION:								
DETAILS OF:								
MADE			DATE		CONTRACT		REV.	
NO.			DATE		DESCRIPTION:		REVISION	